



THE UNITED REPUBLIC OF TANZANIA  
NATIONAL BUREAU OF STATISTICS



*(All Official Correspondence should be addressed to the Statistician General)*

*In reply please quote:*

**Our Ref:** BD/50/156/01/28

**Date:** 31 August 2025

**INDEX OF INDUSTRIAL PRODUCTION (IIP) RELEASE FOR  
APRIL - JUNE 2025**

**Definition**

The Index of Industrial Production (IIP) measures volume changes in the production by different industrial sectors of an economy. IIP is the index that indicates the performance of various industrial sectors of the economy. The quarterly IIP shows the short-term fluctuations in the economy as well as identifying the turning points in economic development at the earlier stage. Furthermore, it is used in economic policy making and forecasting future economic performance in the industrial sector.

The volume of industrial production is collected every quarter (Q1: January - March), (Q2: April - June), (Q3: July - September) and (Q4: October - December).

**Scope, Coverage and Classification**

The IIP compilation follows the recommended International Standards Industrial Classification of all economic activities (ISIC) Revision 4 to enhance international comparison. The ISIC classifies all the economic activities of the economy and uses the term 'industry' in a broad sense to mean any economic activity. However, in the compilation of IIP the scope covers four broad sectors of the economy as classified in the International Recommendations for Industrial Statistics of 2008 and International Recommendations for Index of Industrial Production of 2010. The sectors are mining and quarrying; manufacturing; electricity, gas, steam and air conditioning supply and water supply; sewerage, waste management and remediation activities.

**Weighting and a Reference Period**

The IIP uses industrial weighting approach for aggregating the elementary indices. The approach focuses on the way industrial production is organized and data is easily accessible. Weights used in IIP are value added for activities derived from the Annual Survey of Industrial Production, 2015. The reference period for IIP is the fourth quarter (October - December) 2018.

## Index Calculation Procedures

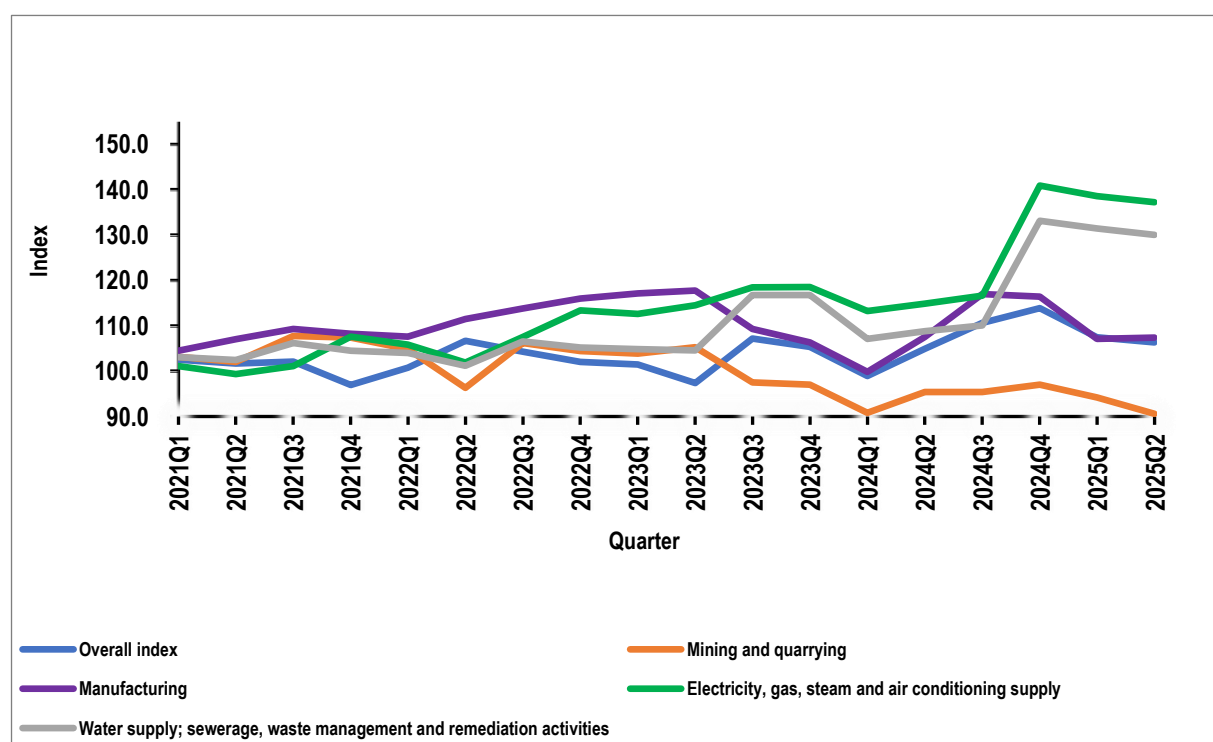
Indices are calculated by comparing the volume of production in the current period with that in reference (base) period. The result at first stage is a set of volume relatives for the elementary items in the index series. The elementary indices are subsequently aggregated as weighted averages to obtain the indices at higher levels. The base weighted Laspeyres index is used for calculation of index series.

## Index of Industrial Production Broad Sectors

The overall Index of Industrial Production decreased from 107.5 in the first quarter of 2025 to 106.4 in the second quarter of 2025, recording a decrease by -1.0 percentage change over the period. The decrease is attributed to mining and quarrying subsector which decreased by 3.8 percent, followed by water supply; sewerage, waste management and remediation activities which decreased by 1.1 percent and electricity, gas, steam and air conditioning supply decreased by 1.0 percent.

On other hand, long term index recorded an increase from 104.9 in the second quarter of 2024 to 106.4 of second quarter 2025 recording an increase of 1.4 percentage change. The increase was attributed to water supply; sewerage, waste management and remediation activities which increased by 19.5 percent followed by electricity, gas, steam and air conditioning supply subsector which increased by 19.4 percent.

**Chart 1: Quarterly Indices of Industrial Production by Broad Sector (2018Q4=100):2018Q4 to 2025Q2**



## **Index of Industrial Production in Manufacturing Industrial Activity**

The index in manufacturing sub-sector when comparing current quarter to the previous quarter shows a slightly increase by 0.2 percent from 107.2 of first quarter of 2025 to 107.4 of second quarter of 2025. An increase was attributed to Manufacture of wood and of products of wood and cork, except furniture; manufacture of articles of straw and plaiting materials which increased by 30.6 percent, followed by manufacture of tobacco products which decreased by 27.7 percent and Manufacture of basic pharmaceutical products and pharmaceutical preparations which increased by 19.1 percent. Whereas, Manufacture of textiles decreased by 29.2 percent followed by Printing and reproduction of recorded media which decreased by 14.9 percent and manufacture of paper and paper products which decreased by 10.6 percent.

On the other hand, comparing IIP in manufacturing sub-sector of second quarter of the current year of 2025 to the corresponding quarter in the previous year of 2024, the results indicate decrease by 0.1 percent from index of 107.5 in second quarter of 2024 to 107.4 in second quarter of 2025. The decrease was attributed to manufacture of textiles by 32.7 followed by manufacture of paper and paper products which decreased by 21.9 percent and manufacture of rubber and plastic products which decreased by 19.5 percent. However, during the similar period, the index shows an increase in manufacture of electrical equipment which increased by 23.7 percent followed by manufacture of furniture which increased by 22.3 percent and manufacture of beverages which increased by 20.5 percent.

## Quarterly Index of Industrial Production by Industrial Activity 2024Q3 (2018Q4 = 100)

ISIC REV. 4	Industrial Activity	Weight	2024Q2	2025Q1	2025Q2	Percentage change	
						2025Q1 VS 2025Q2	2025Q2 VS 2024Q2
<b>B</b>	<b>Mining and quarrying</b>	<b>28.8</b>	<b>95.4</b>	<b>94.2</b>	<b>90.6</b>	<b>-3.8</b>	<b>-5.0</b>
7	Mining of metal ores	23.8	92.8	93.5	89.8	-4.0	-3.2
8	Other mining and quarrying	5.0	107.7	97.5	94.2	-3.3	-12.5
<b>C</b>	<b>Manufacturing</b>	<b>58.0</b>	<b>107.5</b>	<b>107.2</b>	<b>107.4</b>	<b>0.2</b>	<b>-0.1</b>
10	Manufacture of food products	12.6	96.7	87.9	88.3	0.5	-8.6
11	Manufacture of beverages	14.5	119.5	144.0	144.0	0.0	20.5
12	Manufacture of tobacco products	4.8	103.6	69.5	88.7	27.7	-14.4
13	Manufacture of textiles	1.7	91.7	87.2	61.7	-29.2	-32.7
15	Manufacture of leather and related products	0.1	102.0	107.2	108.2	0.9	6.1
16	Manufacture of wood and of products of wood and cork, except furniture; manufacture of articles of straw and plaiting materials	1.4	90.4	71.6	93.6	30.6	3.6
17	Manufacture of paper and paper products	3.3	126.2	110.3	98.6	-10.6	-21.9
18	Printing and reproduction of recorded media	1.4	100.8	103.5	88.1	-14.9	-12.6
19	Manufacture of coke and refined petroleum products	0.1	107.1	112.1	121.1	8.0	13.1
20	Manufacture of chemicals and chemical products	2.6	110.9	113.8	101.4	-10.8	-8.5
21	Manufacture of basic pharmaceutical products and pharmaceutical preparations	0.4	120.0	106.6	127.0	19.1	5.8
22	Manufacture of rubber and plastics products	2.6	125.1	108.1	100.7	-6.9	-19.5
23	Manufacture of other non-metallic mineral products	5.6	98.1	99.6	99.1	-0.5	1.0
24	Manufacture of basic metals	3.0	100.4	97.8	96.7	-1.1	-3.8
25	Manufacture of fabricated metal products, except machinery and equipment	0.3	117.1	95.4	96.7	1.3	-17.4
27	Manufacture of electrical equipment	0.5	81.8	101.4	101.2	-0.2	23.7
28	Manufacture of machinery and equipment n.e.c.	0.1	109.1	104.5	102.3	-2.2	-6.3
29	Manufacture of motor vehicles, trailers and semi-trailers	0.4	111.9	110.0	117.7	6.9	5.2
31	Manufacture of furniture	2.2	110.5	120.2	135.1	12.4	22.3
32	Other manufacturing	0.2	105.9	95.5	100.0	4.7	-5.6
33	Repair and installation of machinery and equipment	0.2	114.4	107.7	105.6	-2.0	-7.7
<b>D</b>	<b>Electricity, gas, steam and air conditioning supply</b>	<b>11.7</b>	<b>114.9</b>	<b>138.6</b>	<b>137.2</b>	<b>-1.0</b>	<b>19.4</b>
<b>E</b>	<b>Water supply; sewerage, waste management and remediation activities</b>	<b>1.5</b>	<b>108.8</b>	<b>131.4</b>	<b>130.0</b>	<b>-1.1</b>	<b>19.5</b>
<b>Overall Index</b>		<b>100.0</b>	<b>104.9</b>	<b>107.5</b>	<b>106.4</b>	<b>-1.0</b>	<b>1.4</b>